



# INVISIBLE

*Mini-Split Air Conditioner  
12,000 - 60,000 BTU/H Concealed Model  
MCD R32 Series 50Hz*

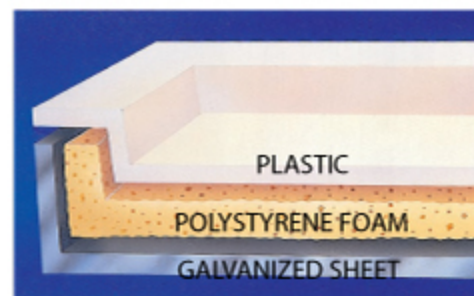
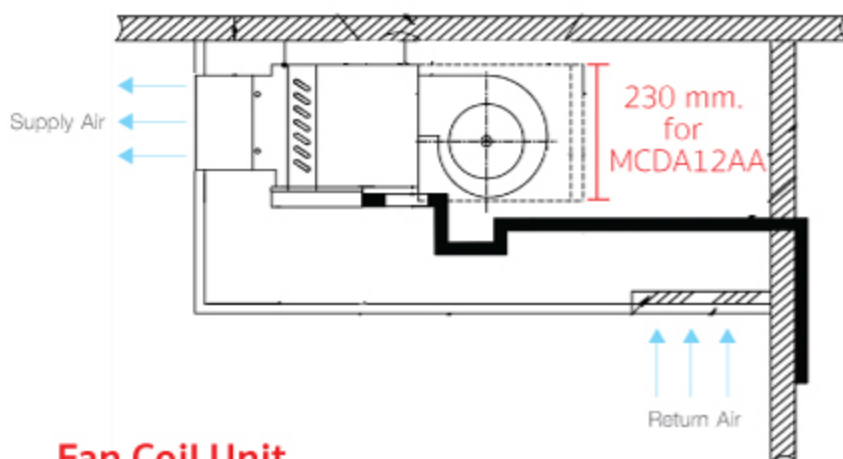
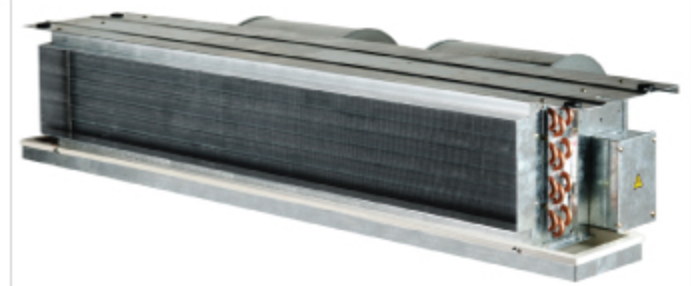






# Invisible

*Concealed Type*  
*12,000-60,000 Btu/h*  
*MCD Series 50Hz*



- Distribute airflow with low speed. Equipped with the return-air-plenum for quieter operation (comes as a standard for 30,000-60,000 Btu/h models).
- Various fan speeds are available especially Extra-High speed mode which is available for 30,000-60,000 Btu/h models.
- All models have full cooling capacity and save more electricity.
- The 12,000, 18,000 and 24,000 BTU/h models are applicable for the Multi-split system.
- 3-layer drain pan equipped with insulator is specially inclined, for high efficiencies in draining.
- Specially designed high-grade plastic drainage pipe with high durability.

## Fan Coil Unit

- The product is available from 12,000 – 60,000 BTU.
- Concealed type of air conditioners, designed to be easily installed on a confined ceiling.
- New compact design, easy to install, especially for 30,000 – 36,000 BTU/h models with heights of only 30 centimeters.
- Suitable for free-blow or low static applications.

## Control Options for Invisible



Mini-display & LCD Wireless Remote Control (024-1132)



LCD Wired Control (690416300001)



Room Thermostat



### Trane Wall Thermostat II (optional)

Trane's Wall Thermostat II is used to control four levels of fan speed. Its temperature setting ranges from 15 °C - 30 °C. It has compressor's status display and is equipped with a receiver for a remote controller.



### Condensate Drain Pump (optional)

Trane's small-sized water pump for the fan coil unit. The water pump set consists of the pump body and water level controller (suitable for 1-5 ton air conditioners).

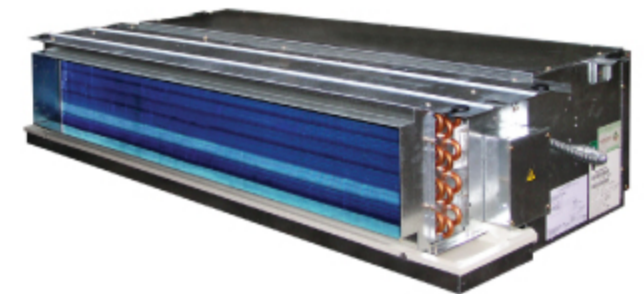
\*Please calculate the drainage flow rate according to the actual range of the suction and compression pipes (refer to the manual) appropriate to the usage.



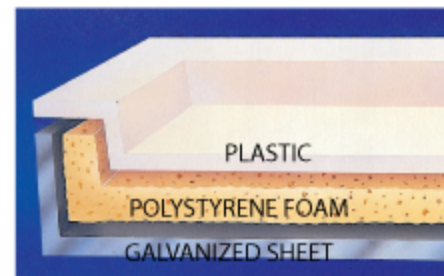
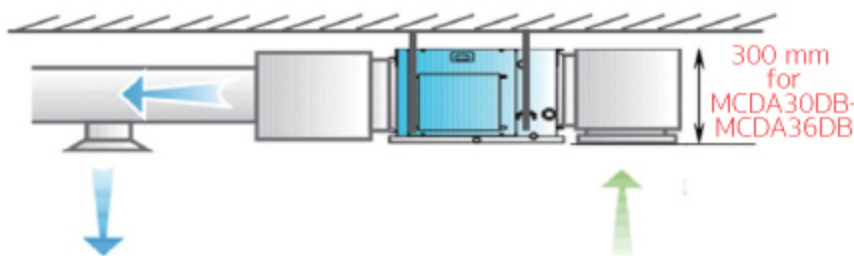


# Invisible

*Concealed Type  
30,000-60,000 Btu/h  
MCD Series 50 Hz*



- Distribute airflow with low speed. Equipped with the return-air-plenum for quieter operation.
- Choose from various fan speed modes, with an Extra-High speed mode to cater to the various needs.
- Cooling coils coated with hydrophilic substance for efficient heat transfer.
- All models have full cooling capacity and save more electricity.
- 3-layer drain pan equipped with insulator is specially inclined for high efficiencies in draining.
- Specially designed high-grade plastic drainage pipe with high durability.



## Fan Coil Unit

- The product is available from 30,000 – 60,000 BTU/h
- Concealed type of air conditioners, designed to be easily installed on a confined ceiling.
- New compact design, easy to install, especially for 30,000 – 36,000 BTU/h models have heights of only 30 centimeters.
- Suitable for high-static applications.

## Condensing Unit

- Aluminum fin condenser coil designed for effective operation.
- Compactly-designed condensing units that can be installed anywhere, even within a small area and which are highly effective in cooling.
- Equipped with shut-off valves.
- The terminal block in the condensing unit is fire retardant material and certified with IEC 60335-2-40 standard
- 7-Year warranty for compressor and 2-Year warranty for other parts.

### Optional Equipment

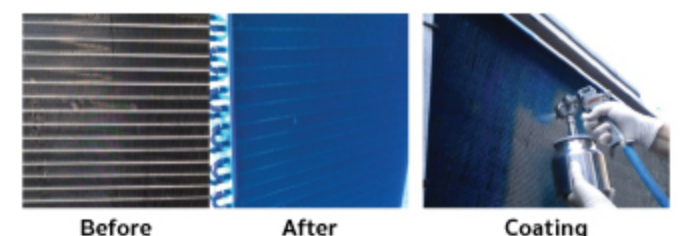
- Blue fin and Copper fin condenser coil equipped with a quality stainless casing for usage in highly-corrosive areas such as the seaside.
- 45° Discharge Grilles help increase the cooling efficiency even in confined places.



### Voltage / Phase Protection

This safety device helps protect compressor in case operation voltage is not steady or mis-phase wiring connection happen.

### Anti-Corrosive Agent (optional)



TR-DTM helps to slow down coil corrosion caused from exposure to corrosive environments such as the seaside or from chemicals in industrial factories. It passes the Salt-Spray Test under the ASTM B117 standard for more than 5,000 – 10,000 hours.



## Product Specifications (Free Blow)

Model	Indoor Unit	MCDE12AA TTKE12HB	MCDE18AA TTKE18HB	MCDE24AA TTKE24HB	MCDE30EB TTKE30KB	MCDE36EB TTKE36KB	MCDE42EB TTKE42KD	MCDE48EB TTKE48KD	MCDE60EB TTKE60KD	
Electrical Data	Power Supply	220-240/1/50								
Performance Data	Cooling Capacity	12,000	18,000	24,000	30,000	36,000	42,000	48,000	60,000	
	Airflow	400	600	800	1,000	1,200	1,400	1,600	2,000	
<b>Indoor Units</b>										
Fan Motor	RLA	0.49	0.49	0.58	1.25	1.38	1.45	1.45	1.45	
Dimensions	H x W x D	230x946x445	260x946x445	300x1,150x600	300x1,150x600	300x1,251x610	394x1,251x711	408x1,098x745	408x1,251x745	
	Weight	20	23	26	36	40	40	49	55	
<b>Outdoor Units</b>										
Expansion Device										
Compressor										
Type										
Rotary										
Fan Motor	RLA	3.9	6.1	8.0	11.6	12.5	5.0	8.9	9.9	
Dimensions	RLA x Qty	0.33	0.48	0.48	0.90	0.50	1.65	1.65	0.75x2	
	H x W x D	540 x 763 x 257	596 x 818 x 303	649x 841 x 334	795 x 1,018 x 360					
Weight	kg	30	42	50	82	82	86	90	100	
Piping Connection Type										
Shut-off Valve Flare Connection										
Refrigerant Pipe Size	Liquid	1/4	1/4	1/4	3/8	3/8	3/8	3/8	3/8	
	Suction	1/2	1/2	5/8	5/8	5/8	5/8	3/4	3/4	
Refrigerant	R32									

Note: 1. Capacity is rated at ARI conditions of 80°/67° FDB/FWB for Indoor & 95° FDB for Outdoor  
 2. Outdoor unit dimensions depth is not included the dimensions of units legs.  
 3. Certified TIS 2134-2553 for 12,000 – 36,000 Btu/h models.  
 4. Product design and specification are subjected to change without prior notice.

## Product Specifications (Ducted)

Model	Indoor Unit	MCDE30DB TTKE30KB	MCDE36DB TTKE36KB	MCDE42DB TTKE42KD	MCDE48DB TTKE48KD	MCDE60DB TTKE60KD
Electrical Data	Power Supply	220-240/1/50				
Performance Data	Cooling Capacity	30,000	36,000	42,000	48,000	60,000
	Airflow	1,000	1,200	1,400	1,600	2,000
<b>Indoor Unit</b>						
Fan Motor	RLA	1.90	1.85	3.46	3.46	3.53
Dimensions	H x W x D	300x1,150x600	300x1,251x610	394x1,251x711	408x1,098x745	408x1,251x745
	Weight	36	40	40	49	55
<b>Outdoor Unit</b>						
Expansion Device						
Compressor						
Type						
Rotary						
Fan Motor	RLA	11.6	12.5	5.0	8.9	9.9
Dimensions	RLA	0.90	0.50	1.65	1.65	0.75x2
	H x W x D	795 x 1,018 x 360				
Weight	kg	82	82	86	90	100
Piping Connection Type						
Shut-off Valve Flare Connection						
Refrigerant Pipe Size	Liquid	3/8	3/8	3/8	3/8	3/8
	Suction	5/8	5/8	5/8	3/4	3/4
Refrigerant	R32					

Note: 1. Capacity is rated at ARI conditions of 80°/67° FDB/FWB for Indoor & 95° FDB for Outdoor  
 2. Outdoor unit dimensions depth is not included the dimensions of units legs.  
 3. Certified TIS 2134-2553 for 12,000 – 36,000 Btu/h models.  
 4. Product design and specification are subjected to change without prior notice.



Trane – by Trane Technologies (NYSE: TT), a global climate innovator – creates comfortable, energy efficient indoor environments through a broad portfolio of heating, ventilating and air conditioning systems and controls, services, parts and supply. For more information, please visit [tranethailand.com](http://tranethailand.com).

All trademarks referenced in this document are the trademarks of their respective owners.

### Trane (Thailand)

1126/2, 30<sup>th</sup>-31<sup>st</sup> Fl., Vanit Building 2, New Petchburi Road, Makkasan, Ratchthevee, Bangkok, 10400

0-2761-1111



@tranethailand

FB/tranethailand

www.tranethailand.com