



INVISIBLE SERIES 5

Concealed Type

13,000 - 40,500 Btu/h

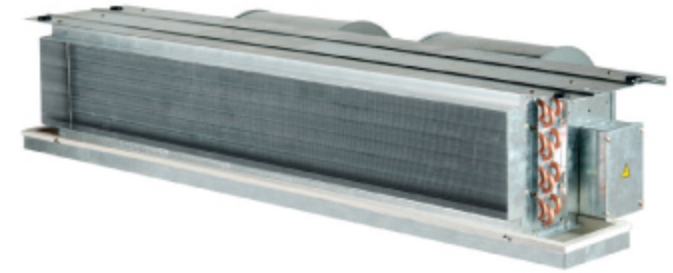
MCD R32 Series 50Hz

TRANE
TECHNOLOGIES





Invisible Series 5



The Trane Standard is Worth Your Every Cent.

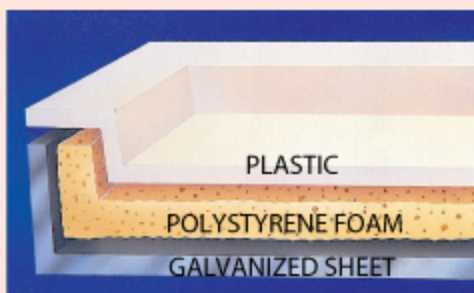
With the ability to distribute coolness around the room, Trane **Invisible Series 5** air conditioners are designed to be concealed within the ceilings, allowing you to decorate your rooms freely both in your living rooms or bedrooms, no matter the placements of the air conditioners.

- Full BTU capacity
- Suitable for free-blow or low-static applications

New Efficiency Standards

With a commitment to produce the most efficient and economical air conditioner, Trane has developed **Invisible Series 5** to have a seasonal energy efficiency ratio (SEER) under Energy Efficiency Label No. 5 standard in 2019* by the Electricity Generating Authority of Thailand (EGAT) and the TIS 2134, guaranteeing the air conditioners' quality in cooling you down and saving your electrical bills.

*Remark: SEER \geq 12.85 for units with 27,200 Btu/hr or less
SEER \geq 12.40 for units with 27,200 Btu/hr or more



Special designed 3-layered drain pan : the most inner layer made of plastic, the 2nd layer insulated with polystyrene foam, and the outermost layer is reinforced with galvanized steel and equipped with high-grade plastic drainage pipes.

- Prevent basin leakage problems, ensuring that the ceiling will not be damaged from water leakage.
- Designed to be more inclined for better drainage, avoiding mold accumulation in the basin.



Condensate Drain Pump (optional)

Trane's small-sized water pump for the fan coil unit. The water pump set consists of the pump body and water level controller (suitable for 1-5 ton air conditioners).

*Please calculate the drainage flow rate according to the actual range of the suction and compression pipes (refer to the manual) appropriate to the usage.



High efficiency condensing unit



The beautiful and compact unit can be installed within a small area and is trusted for their effective low-noise working quality. The R32 refrigerant used in the unit is environmentally-friendly. Its compressor is also under a 7-year warranty including shut-off valve and other parts under a 2-year warranty.

Voltage / Phase Protection



This safety device helps protect compressor in case operation voltage is not steady or mis-phase wiring connection happen.

Special equipments for high efficiency condensing set (Optional)

- 45° Discharge Grilles help increase the cooling efficiency even in confined places.
- Condenser coil with blue fin, copper fin or TR-DTM corrosion protection coating equipped with a quality stainless casing for usage in high-corrosion areas such as the seaside.
- The terminal block in the condensing unit is fire retardant material and certified with IEC 60335-2-40 standard.



Various choices of control device are available (Optional)



New Room Thermostat

Room Thermostat

- 16 °C - 30 °C temperature setting
- Fan speed setting
- Auto restart



LCD wired controller (optional)

Digital LED Wired Control

- Powercool mode
- Econo mode
- Sleep mode
- 24-hour programmable timer
- Auto restart

Wireless Control

- Turbo mode
- Econo mode
- Sleep mode
- 24-hour programmable timer
- Auto restart



Mini-display



LCD wireless display

Remote controller (optional) (ACYSTAT130AA)



Trane Wall Thermostat II

Trane's Wall Thermostat II is used to control four different fan speeds. It has a temperature setting ranging from 15 °C - 30 °C, displays the compressor's status, and is equipped with a receiver for a remote controller.

Product Specifications (Free Blow)

Model	Indoor Unit		MCDE12AA5	MCDE18AA5	MCDE24AA5	MCDE30EB5	MCDE36EB5	MCDE42EB5
	Outdoor Unit		TTKE12HB5	TTKE18HB5	TTKE24HB5	TTKE30KB5	TTKE36KB5	TTKE42KD5
Performance Data	Cooling Capacity	Btu/h	13,000	20,000	25,000	31,000	36,500	40,500
	SEER	Btu/h/W	13.84	13.30	13.84	13.00	13.39	13.39
	Input Power ^(Full Load)	W	1,020	1,590	1,920	2,560	2,980	3,240
	Airflow	cfm	400	600	800	1,000	1,200	1,400
Indoor Unit								
Electrical Data	Power Supply	V/Ph/Hz	220-240/1/50					
Fan Motor	RLA x Qty	A	0.48	0.67	0.86	1.71	1.56	1.56
Control Type	Wireless Remote	Option	•	•	•	•	•	•
	Digital Wired	Option	•	•	•	•	•	•
	Room Thermostat	Option	•	•	•	•	•	•
Installation Position	Concealed		•	•	•	•	•	•
Dimensions	H x W x D	mm	260x1098x456	260x1251x510	260x1251x510	408x1098x745	408x1251x745	408x1251x745
Weight	Uncrated (Net)	kg	26	29	29	47	59	59
Piping Connection Type	Service Valve - Flare Connection							
Outdoor Unit								
Electrical Data	Power Supply	V/Ph/Hz	220-240/1/50					
Expansion Device	Capillary Tube							
Compressor	Type		Rotary					
Fan Motor	RLA	A	3.90	6.10	8.00	9.20	11.40	4.20
	Type		Permanent Split Capacitor					
	RLA x Qty	A	0.33	0.48	0.48	0.65	0.65	0.65
Dimensions	H x W x D	mm	540x763x257	596x818x303	649x841x334	998x1078x360	998x1078x360	998x1078x360
Weight		kg	30	42	50	65	65	85
Piping Connection Type	Service Valve - Flare Connection							
Refrigerant Pipe Size	Liquid	in	1/4	1/4	1/4	3/8	3/8	3/8
	Suction	in	1/2	1/2	5/8	5/8	5/8	5/8
Refrigerant	R-32							
TIS 2134-2553 Mark			⊕	⊕	⊕	⊕	⊕	⊕

Note: 1. Capacity is rated at ARI conditions of 80
 2. Outdoor unit dimensions depth does not include the dimensions of unit's legs.
 3. Product design and specification are subject to change without notice.



Trane – by Trane Technologies (NYSE: TT), a global climate innovator – creates comfortable, energy efficient indoor environments through a broad portfolio of heating, ventilating and air conditioning systems and controls, services, parts and supply. For more information, please visit tranethailand.com.

All trademarks referenced in this document are the trademarks of their respective owners.

Trane (Thailand)

1126/2, 30th-31st Fl., Vanit Building 2, New Petchburi Road, Makkasan, Ratchthevee, Bangkok, 10400

0-2761-1111



@tranethailand



FB/tranethailand



www.tranethailand.com