

National Line Card

Products, Systems & Solutions



Approach

Our goal is to deliver the outcomes that matter most to you—from more comfortable indoor environments to energy efficient operations. We take a consultative approach to understand your unique business objectives, gather data and information to make informed recommendations, and support you from implementation to validation.

Trane's Offerings

Our capabilities include commercial systems, energy services & solutions, contracting, controls/building automation, rentals and service.



Building Services

Help reduce operating costs and extend the life of your equipment with planned, reliable, preventative and proactive scheduled maintenance and repair by Trane factory trained technicians.

- Service Agreements
 - Connected Mechanical Service Agreements
- Extended Warranty
- Quoted Repair Products



Digital Services

Leverage your data and Trane's analytics to create simple dashboards that can help you to understand performance of your building and its assets. Dashboards can help to find opportunities for increasing efficiency, decreasing energy use, and increasing productivity through system optimization.

- Connected Building Service Agreements
- Turn building data into useful insights with TraneConnect™
- Trane® Autonomous Control



Intelligent Services

Trane Intelligent Services provides one-on-one consultative support to reduce energy use, manage operational costs, and optimize building performance. Take the guesswork out of understanding building data to achieve more comfortable spaces while meeting your financial and environmental goals.



Rental Services

24/7/365 local service, engineering expertise and an expansive fleet of rental products. Promptly provides temporary, scalable HVAC and power from standard applications to complex solutions

- Water-Cooled Chillers, Air-Cooled Chillers, Temporary Power, Cooling Towers, Packaged A/C Units, Air Handlers, Portable A/C Units, Cold Storage Containers, Heat Pump Units



IAQ Services

Today there are more ways than ever to assess and manage indoor air quality, while keeping your goals for cost and sustainability in sight. Trane offers a variety of services, innovative technologies, and proven solutions for measuring and monitoring IAQ. We can help you align with air quality guidelines and recommendations set by the CDC, EPA, and ASHRAE.



Trane Creative Solutions

Customized Trane Equipment Modifications Including: Multizone Replacements, Water-Side Economizer Coils for Air-Cooled Chillers, Packaged Air-Cooled Ice Storage Systems, Acoustical Attenuation



Engineer and Contractor Resources

Trane is here to support, enable and educate Engineers and Contractors through comprehensive tools and resources, design and analysis tools, professional education and training, BIM and CAD drawings, and pre-engineered system solutions.

traneengineer.com | tranecontractors.com



Engineered Systems

- Comprehensive Chilled Water Systems
- Comprehensive Chiller- Heater Systems
- CoolSense® Integrated Outdoor Systems
- Geothermal Systems
- Intelligent Variable Air Systems
- Thermal Battery Systems
- Variable Refrigerant Flow (VRF) Systems
- Zoned Rooftop Systems



System Components

- Hydronic Branch Conductor



Energy Services

Trane enables more efficient, sustainable buildings by providing a single source for decarbonization and modernization solutions, programmatic implementation services, and financing and funding options. We use deep expertise and a data driven approach to understand how energy impacts your unique situation, and collaborate to develop strategies to deliver your goals for carbon reduction, resiliency, and energy optimization.

Energy Solutions include:

Building modernization and automation | Lighting | Water Conservation | Renewables and Distributed Energy Resources | Funding, financing, and procurement programs

Trane is accredited by NAESCO as an Energy Services Provider (ESP), a U.S. DOE-qualified Energy Services Company (ESCO), and recognized by the Canadian Federal Buildings Initiative as a qualified bidder.

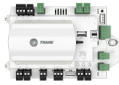
Building Automation



Tracer® SC+
Scalable building automation system solution with standard, open protocols



Pivot® Smart Thermostat
Wi-Fi & Ethernet thermostat for light commercial applications



Symbio®
Application Specific and Programmable Unit Controllers, Integrates with BACnet MSTP, BACnet/IP, BACnet/Zigbee, LonTalk & Modbus Protocols



Air-Fi® Zone Sensors
Flexible and reliable wireless sensors & system communications leveraging Air-Fi® Wireless (BACnet/Zigbee) technology. Sensors include temperature, humidity, CO₂ & occupancy

Building Management Systems



Tracer® Ensemble®
Enterprise level building management software for facility professionals



Tracer® Synchrony®
Tracer SC+'s built-in web based user interface software for building operators



Tracer® Concierge®
Light commercial control system with set-up wizard for installers and simple user interface for non-technical users



BAS Operator and Occupant Apps
Providing mobile access to service providers, building operators, and occupants



Trane® Autonomous Control
AI-based solution that performs automatic system optimization using real-time weather data and predictions, building occupancy trends & energy usage patterns

IAQ Solutions



Synexis
Best in class air purification and surface cleanliness by creating Dry Hydrogen Peroxide from naturally occurring oxygen and humidity in the air to significantly reduce many different pathogens.



TCACS
Trane Catalytic Air Cleaning System (TCACS) is an enhanced air filter containing 3 technologies: filtration, ultraviolet light, and a photocatalytic oxidation (PCO) process

Trane® / Mitsubishi Electric VRF & Ductless



CITY MULTI® VRF
Energy efficient air and water cooled, all electric VRF systems available in high efficiency, and H2i® (Hyper-Heat); 6 - 36 Tons



HVRF
All electric, hybrid VRF system that uses refrigerant and water. Hybrid Branch Controller provides simultaneous heating and cooling; 6 - 36 Tons



P & M Series
Ductless systems for superior comfort, flexibility and reliability with precise zone control to distribute heating or cooling only to spaces in use; 0.5 - 5 Tons



SMART MULTI®
Light commercial multi-zone ductless heat pump system, side discharge outdoor unit; 3 - 10 Tons



Indoor Units
A variety of indoor units available to meet any application and design requirements, including ceiling cassettes, wall mounted, concealed and more



LEV Kit
The power to connect Trane® / Mitsubishi Electric CITY MULTI® products to Trane air handlers; allows for higher airflows, higher static pressure, larger capacity, customized products, and DOAS configurations

Data Center Cooling



Trane Fan Coil Wall (TCDC)
The Trane TCDC Fan Coil Wall (FCW) is an advanced, energy-efficient cooling solution with capacities up to 670kW and 110K CFM, designed to maintain precise temperature and humidity control in modern data centers, ensuring optimal performance and uptime.

Water-Cooled Centrifugal Chillers



Agility® Model HDWA
175 - 425 Tons; Heating and Cooling capable; Up to 130°F HW; 60 Hz, 50 Hz; Symbio® 800 controller; R-513A



CenTraVac® Model CVHE
3-Stage Compressor; Heating and Cooling capable; Free Cooling; Symbio® 800 controller; 200 - 500 Tons; R-514A



CenTraVac® Model CVHF
2-Stage Compressor; Heating and Cooling capable; Free Cooling; Heat recovery operation; Symbio® 800 controller; 325 - 1800 Tons; R-514A



CenTraVac® Model CVHH
Multi-stage compressor; Heating and Cooling capable; Free Cooling; Heat recovery operation; Symbio® 800 controller; 900 - 2000 Tons; R-1233zd



CenTraVac® Model CDHF
Multi-Stage Dual Compressor; Heating and Cooling capable; Free Cooling; Symbio® 800 controller; 1450 - 3950 Tons; R-514A



CenTraVac® Model CDHH
Multi-stage; Dual Compressor; Heating and Cooling capable; Free Cooling; Heat recovery operation; Symbio® 800 controller; 1800 - 4000+ Tons; R-1233zd

Water-Cooled Helical Rotary Chillers



Series R™ Model RTWD
Helical Rotary Compressor; Heating and Cooling capable; Heat recovery operation; Up to 165°F HW production; Symbio® 800 controller; 80 - 250 Tons; R-513A and R-515B



Series R™ Model RTHD
Optional Variable Speed Helical Rotary Compressor; Heating and Cooling Capable; Heat recovery operation; Symbio® 800 controller; 175 - 400 tons; R-513A

Air-Cooled Chillers



Ascend® Model ACX
Air-to-Water Heat Pump; Symbio® 800 controller; 140-230 tons cooling; 1500 - 2500 MBh heating; R-454B



Ascend® Model ACS
Scroll Compressor; Symbio® 800 controller; 140 - 230 Tons; R-454B; Heat recovery



Ascend® Model ACR
Variable Speed Helical Rotary Compressor; Free Cooling; Symbio® 800 controller; 150 - 550 Tons; R-513A



Model CGAM
Scroll Compressor; Symbio® 800 controller; 20 - 130 Tons; R-454B; Heat recovery option



Model TCAA
Oil Free Centrifugal; 60 - 440 Tons; R-513A



Sintesis® Model RTAF
Variable Speed Helical Rotary Compressor; Symbio® 800 controller; 115 - 500 Tons; R-513A

Industrial Process Cooling



TAEvo TECH
Air-cooled process chiller;
Indoor and outdoor use;
1-50 Tons; R-410a



ARIES TECH2
Air-cooled process chiller;
Outdoor use; 60-200 Tons; R-410a

Modular Units



Thermafit® Model AMC
Air-Cooled Chiller; Optional Free-Cooling, Heat Recovery Up to 140°F (60°C); 15-80T Modules (1 - 12 Modules per Bank); R-454B



Thermafit® Model MWC
Water-Cooled Chiller; Optional Heat Recovery Up to 180°F*; 15-80T Modules (1 - 12 Modules per Bank); R-454B; R-513*



Thermafit® Model MAR
Split Chiller with Remote Condenser; 15-80T Modules (1 - 12 Modules per Bank); R-454B



Thermafit® Model AXM
Air-to-Water Heat Pump Vapor Injection Compressors; Up to 140°F (60°C) 30T Modules; 374 MBH (2 - 12 Modules per Bank); R-454B



Thermafit® Model WXM
Water-to-Water Heat Pump; Up to 140°F (60°C) 20-80T Modules; 262-1033 MBH (1 - 12 Modules per Bank); R-454B



Thermafit® Model MWS
Water-Source Multi-pipe; Up to 140°F (60°C) 30-60T Modules; 432-942 MBH (3 - 10 Modules per Bank); R-454B



Thermafit® Model MAS
Air-Source Multi-pipe; Vapor Injection Compressors; Up to 140°F (60°C); 30T Modules; 433 MBH (3 - 10 Modules per Bank); R-454B



Thermafit® Model TACW
Water-cooled chiller; Oil-free centrifugal; 60 - 135 Tons (1000 Ton Banks); R-513A

Thermal Storage



Thermal Energy Storage Tanks
Helps manage peak electric demand for buildings with chilled water heating and cooling systems above 100 tons. Enhances energy usage and helps lower operating costs by storing and leveraging renewable, excess, or inexpensive energy.



Thermal Battery Air-Cooled Chiller Plant
Pre-Engineered, Factory Built Cooling System. Incl: Air-Cooled Chillers, CALMAC® Energy Storage Tanks, Customizable System



Thermal Battery Storage-Source Heat Pump System
Delivers Heating and Cooling, Supports Electrification. Incl: Water-to-Water and Air-to-Water Heat Pumps, CALMAC® Energy Storage Tanks, Trane Controls

Packaged Units



Impack®
Cooling, Gas/Electric, Heat Pump & Dual 1-Fuel; Multiple Efficiency Levels; Up to 16 SEER; (1 ph-15 SEER2); 2 - 5 Tons



Foundation®
Cooling, Gas/Electric; Adapts to Competitors Roof Curbs; 3 - 25 Tons



Precedent® & Precedent® with eFlex™
3 - 25 Tons; Cooling, Gas, Electric, Heat Pump & Hybrid Dual Fuel; Standard, High, & eFlex Ultra-High Efficiency (up to 25.4 IEER); Symbio 700 control with Mobile App and Air-Fi® capable



Zoned Rooftop Systems
Pre-designed for small building comfort; Includes Precedent or Voyager rooftop unit, VAV terminal units, Tracer® Concierge™ system control & Air-Fi® wireless controls & sensors; 3 - 50 Tons



Voyager® 3
Cooling, Gas/Electric; eStage™ Multi-Stage Compressors; Full & part load efficiencies; Symbio 700 and Mobile App; Up to 17.5 IEER; 27.5 - 50 Tons



IntelliPak® 1
Cooling, Gas/Electric, Hot Water; 20 - 130 Tons (Available with eFlex™ Variable Speed Compressor; 20 - 75 Tons), Symbio 800 Controller with 7" Touchscreen Display, Air-Fi® Capable; up to 19 IEER



IntelliPak® 2
Cooling, Gas/Electric, Hot Water, Air-Cooled; 90 - 150 Tons, Available with eFlex™ Variable Speed Compressor, Standard Double Wall Foam, Symbio 800 Controller with 7" Touchscreen Display, Air-Fi® Capable; Up to 19.3 IEER



IntelliPak® 3
Cooling, Gas/Electric; 20 - 75 Tons, Available with eFlex™ Variable Speed Compressor, Standard Double Wall Foam, Symbio 800 Controller with 7" Touchscreen Display, Air-Fi® Capable, Up to 17.8 IEER



Trane Thrive (OAXX)
Indoor Agriculture packaged product (DX, Air and Water Cooled); Heat Pump, Gas, and Hot Water; 3-80 Tons



Self-Contained Units



Water-Cooled Self-Contained Model SWUD
Single-piece units ideal for new construction market; Redesigned with upgraded features; Symbio 500 controller with TD7; R-454B; Up to 22.8 IEER; 20-110 Tons



Modular Self-Contained System
Smallest Footprint on the Market; Water-Cooled System; Variable speed compressors and fans; Industry-leading Part Load Efficiency - Up to 20.8 IEER; 25 - 80 Tons, cassette construction

Water-Source Heat Pumps



Axiom™ Standard Efficiency Model GEH/GEV
Horizontal (0.5 - 15T) or vertical (0.5 - 25T); Deluxe sound option for quiet operation; Multiple airflow configurations; 0.5 - 25 Tons



Axiom High Efficiency Single-Stage Model EXH/EXV
Horizontal or vertical; Deluxe sound option for quiet operation; Electronically Commuted Motor (ECM); Rotary or scroll compressor; 0.75 - 6 Tons



Axiom High Efficiency Two-Stage Model DXH/DXV
Horizontal or vertical; 2-Stage compressor; Deluxe sound option for quiet operation; Meets LEED EA4 requirement; 2 - 6 Tons



Axiom Variable Speed Model VSH/VSV
Horizontal or vertical; eFlex™ Variable Speed compressors and fans; Single and three phase voltage; 2 - 5 Tons



Axiom High Efficiency Console Model GEC
ASHRAE 62 indoor air quality compliant; Quiet operation; 0.5 - 1.5 Tons



Axiom Vertical Stack Model GET
Multiple capacities & cabinet sizes; Available in PSC or ECM motors; Flexible air supply options; Integrated controls; 0.75 - 3 Tons



Axiom Water-to-Water Model EXW
Co-axial heat exchanger; Rackable modular design; 5, 10, 20 Tons



Axiom Rooftop Models GWS & GSJ
Boiler/Tower or Geothermal applications; Multiple configuration options; GWS (3-10 Tons); GSJ with Symbio 700 controls (12.5 - 25 Tons)

Air Handling Units



Performance Climate Changer® - Catalog (UCCA)
Dependable performance at an uncompromising value; Compact Footprint; Factory-Engineered, Mounted & Tested Controls; Indoor/Outdoor; <15,000 cfm; 2" R-13 Construction



Performance Climate Changer® - Semi-custom (CSAA/PSCA)
Versatility meets high performance. Robust construction, wide array of options to meet the needs of a variety of industries and environments: Dimensional Flexibility enabling Easy Installation: Indoor/Outdoor; <60,000 cfm; up to +/-10 in w.g.; 2", R-13 or 3", R-19 Construction; Factory Engineered, Mounted & Tested Controls



Performance Climate Changer® - Custom (TCFS/TCPA)
Now available in side-by-side configurations; Indoor or outdoor; Unlimited dimensional flexibility and airflow; Up to +/- 12 in. w.g. operating pressure, with <1/2% air leakage rate; Absolute thermal barrier with performance up to R-25



Trane Air Rotation Unit
Maintains temperature and humidity consistently in spaces >40,000 sf with a ceiling height of >25 ft. Indoor or Outdoor; Up to 300 tons and 120,000+ CFM; CW or DX; 2" Foam Insulated panels, factory engineered & mounted controls

Make-Up Air Gas Heating Units



Model GSAA
Indoor Gas-Fired Make-Up Air Handlers; Standard & High Efficiency; 100 - 1200 MBH



Model GRAA
Outdoor Gas-Fired Make-Up Air Handlers; 100 - 1200 MBH



Model AHOA
Packaged Air Handlers; Cooling, Make-Up Air, & Ventilation

Unit Heaters



Gas Fired Unit Heaters
14 sizes, from 30 to 400 MBh; 409 stainless steel; Single point power; Direct Spark ignition; Tubular heat exchangers; OSHA fan guard



Electric Unit Heaters
Model UHWA/UHAA/UHRA/UHXA/UHEC/UHCA
7 styles, over 200 configurations; Sized from 1.5 to 50 kW; Capacities from 5 to 16.4 MBh; Vertical or horizontal discharge; Single point power; UL Listed



Hydronic Unit Heaters
Model UHS/UHP
38 unit sizes from 8 to 720 MBh; Vertical and horizontal configurations; 2-point or 4-point installation; Single point power: Steam or hot water; OSHA fan guard; ETL/ETLc certified

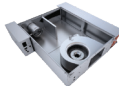


High Efficiency Gas Fired Unit Heater Model HINA/HIPA
6 sizes: 50-400MBH, natural and LP gas. 3:1 self-modulating turndown; >95% Efficiency

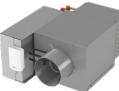
Terminal Units



Blower Coil
Blower Coil Model BCXE; Indoor; Up to 4000 CFM; Horizontal and Vertical Configurations; ECM Motors, Multiple Filter Options, Factory-Engineered & Mounted Controls



CoolSense® Sensible Cooling (DOAS) Terminal Unit
>2200 CFM, MERV-13 filters, and active humidity control



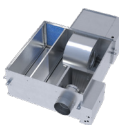
VariTrane® Model VC*F
Single Duct Variable Air Volume Boxes; 25 - 8000 CFM; Optional Factory Installed Piping Package



VariTrane® Model VDDF
Dual Duct Variable Air Volume Boxes; 80 - 8000 CFM



VariTrane® Model VP*F
Parallel Configuration Fan-Powered Variable Air Volume Boxes; 200 - 2200 CFM



VariTrane® Model VS*G
Series Configuration Fan-Powered Variable Air Volume Boxes; 200 - 2500 CFM; optional integral suppressor attenuator available



VariTrane® Model LF**
Low Height Fan-Powered Variable Air Volume Boxes; 100 - 1800 CFM; Parallel or Series Configuration



VariTrane® Model VRRF
Round Inlet/Round Outlet RetroFit Variable Air Volume Boxes; 25 - 4000 CFM



UniTrane® Model FC*B
Horizontal or Vertical Fan Coil; Cabinet, Recessed or Compact Configurations; 200 - 1200 CFM



Force-Flo™ Model FF*B
Horizontal or Vertical Cabinet Heater; Concealed or Recessed Configurations; 200 - 1200 CFM



Model VUVE
Vertical Unit Ventilators; 750 - 1500 CFM



Model HUVC
Horizontal Unit Ventilators; 750 - 2000 CFM

Hydronic System Components



Hydronic Branch Conductor
System component that enables energy-efficient, year-round comfort with any low temp hot water heating solution. Use in retrofits and new construction.

Split Systems



Split Systems
Cooling & Heat Pump; Gas, Electric, or Hot Water Heat; 1.5 - 5 Tons



Odyssey™
Symbio® 700 controller ; Full & part load efficiencies; Up to 14.8 IEER; 6 - 25 Tons



IntelliCore™ Condensing Units (RAUK/CAUK)
R-454B Air-Cooled Condensing Units; Symbio 800 Controls; Available with or without compressors; Available with remote chiller evaporators; 20-120 Tons



Condensing Units (RAUJ/CAUJ)
R-410A Air-Cooled Condensing Units; Available with or without compressors; Available with remote chiller evaporators; 20-120 Tons

Outdoor Air Solutions



Horizon® DOAS (OAXX)
DOAS; Packaged product (DX, Air and Water Cooled); Heat Pump, Gas, and Hot Water; >43°F Dew Point capability; ERV; AHRI 920 rated; 3-80 Tons



Horizon® Flex™ (HAXX)
Up to 100% outdoor air; Packaged product (DX – Gas Heating); >51°F Dew Point capability; ERV; AHRI 340/360 certified; ASHRAE 90.1 compliant; 10 - 15 Tons

VFD



TR150/TR200
Trane Variable Frequency Drives; 6, 12, 18 Pulse



Trane – by Trane Technologies (NYSE: TT), a global climate innovator – creates comfortable, energy efficient indoor environments through a broad portfolio of heating, ventilating and air conditioning systems and controls, services, parts and supply. For more information, please visit trane.com or tranetechnologies.com.

All trademarks referenced in this document are the trademarks of their respective owners.

© 2025 Trane. All Rights Reserved.

EDU-SLB048-EN
02/XX/2025